

CPA'S BRINKERHOFF HOLIDAY BLOCK PARTY



YOU ARE INVITED TO CPA'S
ANNUAL HOLIDAY PARTY
AT THE
BRINKERHOFF AVENUE
LANDMARK DISTRICT,
SANTA BARBARA

SUNDAY, DECEMBER 5, 2010
1:00 - 4:00 P.M.

Tickets and Info Available Online at:
www.citizensplanning.org
(805) 966-3979

Citizens Planning Association of Santa Barbara County

November, 2010

NONPROFIT ORG
U.S. POSTAGE
PAID
SANTA BARBARA, CA
PERMIT NO 62

916 Anacapa Street
Santa Barbara, CA 93101
805.966.3979 ph
805.966.3970 fax
www.citizensplanning.org



Newsletter
of the
November, 2010

Citizens Planning Association of Santa Barbara County



Promoting responsible
land-use planning &
environmental
protection in Santa
Barbara County

CPA Board of Directors

Steve Dunn
President

David Bernal
Executive Vice President

Paul Hernadi
South County Vice President

Carol Nash
North County Vice President

Michael Gray
Treasurer

Mary Louise Days
Secretary

Arelhy Arroyo

Lee Moldaver

Eric Zimmerman

Staff

LeeAnne French
Executive Director

Linda Davis (Accountability
Plus) Bookkeeper

Interns

Emil Kraus

Robin Meacher

Alison Morrow

Madeline Wikander

Catherine Omalev

Above photo: Else Wolff and
LeeAnne French – getting
into the "Victorian" swing of
things in preparation for the
Brinkerhoff party!



YOU'RE INVITED - CPA HOLIDAY PARTY!

BRINKERHOFF HOLIDAY BLOCK PARTY

Please join us for CPA's annual holiday party on
Sunday, December 5th from 1-4:00 pm!

As part of CPA's 50th anniversary, we have been
working with the neighbors in the Brinkerhoff
Avenue Landmark District to put together a spe-
cial event that celebrates the Victorian heritage of
Santa Barbara.

Brinkerhoff Avenue will be closed off between
Cota and Haley Streets for music, merry-making
and holiday treats. Several residents have agreed
to open their homes and businesses to give us an
exclusive peek into the rich history and architec-
ture of this Landmark District -- including a special
favorite - the old Redwood Inn!

* Louise Boucher will be hosting the General
Store again this year and it will be stocked full of
home-made treats to take home.

* The Board of Directors is also sponsoring a
"Giving Tree." Choose an ornament off the tree
and help contribute to the future success of CPA.

This is our biggest fundraiser of the year
and we are looking for volunteers. Please call
LeeAnne (966-3979) if you can volunteer the day
of the event, Dec. 5th. We need at least 25 vol-
unteers. If you prefer to bake, we would greatly

this issue

Executive Director Update P.2

Changes on the CPA Board P.3

Saving Prime Ag Land P.4

Interns Update P.4

Oil Forum II Gulf Oil Disaster P.5

Letter from the President P.6

Venoco Withdraws Ellwood Proj. P.7

Plan Santa Barbara Update P.7

appreciate it if you can whip up something yummy
for the General Store. Thank you!

WHAT: Brinkerhoff Holiday Block Party

WHERE: Brinkerhoff Avenue between Cota and
Haley, Santa Barbara

WHEN: Sunday, December 5th, 1 pm to 4 pm

TICKETS: \$20 in advance, \$25 at the door, \$10
kids (ages 4 to 12)

For members wanting to make an extra
contribution: CPA Patron Ticket \$50.00 each

For tickets, log onto www.citizensplanning.org or
send a check to Citizens Planning Association at
916 Anacapa Street, Santa Barbara, CA 93101
(please note the names of those wishing to
attend). We look forward to celebrating the
holidays in Victorian fashion with you!





Executive Director Update

Director; the head of the Towbes Group; a Goleta planning commissioner; Goleta's Community Development and Public Services directors; a UCSB professor on changing public opinion across the County; the editor of the County's new Clean Air Plan, and considered new development plans in the Las Positas Valley. Check out the standing monthly Committee meetings and the topics we will be discussing in the coming months.

CPA's new Neighborhood Program is getting underway. With encouragement from Don Olson, retired Santa Barbara Planning Director, the CPA Board has agreed to launch the Neighborhood Program to help empower new leaders in under-represented neighborhoods to participate in the community planning process and learn how to navigate City services to meet the needs of the neighborhood.

The Neighborhood Program is Land Use Planning with an immediate Social

Benefit! To get started, we will be focusing on the Lompoc Downtown Neighborhood and the Santa Barbara Westside Neighborhood.

• In Lompoc we have focused on the needs of the blighted Downtown during the General Plan process and are encouraging Lompoc City Council members to focus inwards instead of annexing four proposed areas on the periphery of the City.

• On the SB Westside, we have met with Sally Kingston, principle of Harding University elementary school to begin understanding what is needed to make the Westside a healthy and safe neighborhood for her students. The picture is coming into focus and there are several important opportunities where CPA, with its CPF legacy of community education and empowerment, can really make a difference.

• Wanted: Spanish speakers to join our Neighborhood Committees so that we can build trusting relationships with our neighbors.

If you would like to learn more

or get involved in Lompoc or the Westside -- contact LeeAnne: citizensplanningsb@gmail.com

Looking forward I want to wish you all a JOYOUS holiday season. In these challenging times, we have each other and so much to be thankful for! I want to share my heartfelt THANKS to all of you who have dug a little deeper to help support CPA this Fall.

I hope to see you at CPA's Annual Holiday Party at the BRINKERHOFF BLOCK PARTY on Dec. 5. **This is our most important fundraiser of the year!** Become a CPA Patron with the purchase of a \$50.00 ticket or select an item off our "Giving Tree" to help buy much needed equipment.

I have been "on the job" for six months now and have most enjoyed meeting many of you. If you have not taken the opportunity to stop by the office at 916 Anacapa -- please do! Come by and meet CPA's new mascot -- Daisy -- my Cairne terrier. She puts a smile on everyone's face.

Venoco Withdraws Ellwood Full Field Deveopment Project

CPA and other environmental groups received welcome news -- in a letter dated November 9, 2010, Venoco informed the California State Lands Commission that "Venoco, Inc. hereby withdraws its application for its Ellwood Full Field Development Project. Venoco does not intend to pursue the Project."

Since 2000, the Environmental Defense Center (EDC) has represented CPA and three other environmental groups (Get Oil Out!, Sierra Club, and Citizens for Goleta Valley) in opposing Venoco's plans to expand its drilling operations from Platform Holly near UCSB and Ellwood Mesa. "Venoco's decision to withdraw its Ellwood Full Field

drilling plan is a direct result of massive community opposition," exclaimed Linda Krop, Chief Counsel of the EDC.

The Ellwood Full Field Development Project would have allowed Venoco to drill 40 new wells from Platform Holly into an area known as the South Ellwood Field. Production from the project would have lasted until approximately 2040.

In response to Venoco's proposal, we collectively raised concerns at several public hearings and workshops and pointed out the safety risks that would be caused by using an aging platform - Platform Holly was installed in 1966, and was temporarily shut down in 1999 as a result of hazardous gas

releases. Not only would the proposal have allowed oil drilling within the California Coastal Sanctuary, a potential oil spill would also threaten University of California's Coal Oil Point Reserve, UCSB Marine Science Institute, Devereux Slough and Ellwood Mesa Open Space park in Goleta.

"We are not willing to accept any more risk than we already have," proclaimed Steve Dunn, President of Citizens Planning Association and commercial fisherman. "The BP disaster in the Gulf is a reminder of the inherent risk of offshore oil drilling. We applaud Venoco's decision not to proceed with this project."

Plan Santa Barbara Update

On October 26 and 27, the Santa Barbara City Council met again in hopes of finding the four votes necessary to approve the 2010 Plan Santa Barbara General Plan Update. The update includes a new Introductory Framework and General Plan reorganization, updated Land Use Element, Maps, and Housing Element, as well as amendments and additions to the other six elements.

CPA publically supports Plan Santa Barbara with lingering concerns about the High Density (27-45 dwelling units per acre) designations for the Downtown core and Westside as well as health concerns for residents who live within 500 feet of Highway 101.

On October 27, the Council was unable to build consensus on the issue of density. Council members Williams, Hotchkiss and Francisco formed a sub-committee to try to find a compromise solution that both sides can support.

In the spirit of "roll-up your sleeves" compromise, CPA initiated a parallel Working Group -- an adhoc coalition with representatives from the development community, employers, environmentalists, residents and voters. Our common ground is the desire to bring Plan Santa Barbara to fruition with the best compromise possible to increase the availability of affordable housing while living within our resources and protecting our historical

heritage. We quickly discovered that we had a lot more agreement than not.

Building off of the work of the Council subcommittee, the Working Group Coalition built consensus within our respective groups for a series of suggestions on the issue of density. Our goal is to present these recommendations to the City Council on November 16 with a unified voice in support of their efforts to find consensus.

For a copy of the Working Group Coalition recommendations go to www.citizensplanning.org and click on Policies and Positions.



Established in 1960, Citizens Planning Association (CPA) is one of California's first grassroots environmental organizations. We have been promoting responsible land-use planning and environmental protection in Santa Barbara County for over 50 years!

Our membership consists of any resident who elects to be responsible for what happens in our country, to our land, our environment, and our way of life.

There are no quick or easy fixes to our land-use problems, but CPA offers a unifying voice, a chance for citizens to work together and assure Santa Barbara County's unique qualities are not given away to special interests!

Please help CPA continue the tradition by renewing your membership or joining CPA as our newest member today.

Return the enclosed envelope, call us at 805-966-3979, or join on line at our website: www.citizensplanning.org

CPA is a 501(c)3 non-profit and all donations and membership dues are tax deductible to the fullest extent allowed by law.

Recent and Upcoming Events

- **Dialog on Proposed Expansion Areas in Lompoc -- televised September 2010**
- **Plan Santa Barbara coalition working group on density -- Nov 4 and Nov 9**
- **Freudenburg on BP Oil Disaster and Energy -- November 15 at 5:00pm at UCSB**
- **Goleta Planning and Infrastructure presentations at Land Use Committee meeting November 15 at 11:30 in Goleta**
- **BRINKERHOFF HOLIDAY BLOCK PARTY -- December 5, 2010; 1-4:00 pm**
- **Water Forum -- Countywide series 2011**
- **50th Anniversary Celebration - Stay Tuned for posting of events!**

Letter from the President

With the holidays fast upon us, accept wishes of love, health, peace for our members, staff, volunteers, board, interns. As a grassroots organization, we would not exist without you. Thanks.

Join us for CPA's Holiday block party on Victorian Brinkerhoff Avenue, Sunday, December 5th. Home tours, music, refreshments, fun, an old-fashioned country store, and a rare chance to get a feel for what downtown Santa Barbara was like a century ago. Don't miss it.

Moving toward our 50th birthday, we're up to our armpits in great stuff!

With leadership changes, new board members and energy, and stimulating input from concerned community members, we have trained a portion

of our focus on unmet land use needs within the County's core urban areas. Recognizing the escalating distress, economically and socially, throughout the county we are anticipating a need to assess "the best use" and possible additional uses within the built environment. Our new Neighborhood Program in Lompoc and Santa Barbara could be one of the most important initiatives CPA has taken on in years. CPA is adapting the education curriculum from Citizens Planning Foundation – and taking it to the "Hood". Our goal is to empower 10 new leaders and neighborhood representatives in 2011. We will need your help to identify some of the most pressing issues in your neighborhoods.

Thanks to a nudge from Water Warriors Arve Sjovold and Carolee Krieger, we

are re-energizing our Water Committee. Come and join us.

To help bring Plan Santa Barbara to fruition, CPA spear-headed a Working Group of "unlikely bed-fellows" to collaborate on constructive suggestions to find acceptable compromise on the "Density" issue. We are working to protect what is best about Santa Barbara, while weighing her greatest needs in the coming years through fresh eyes, and planning for them now.

Our intrepid Executive Director, LeeAnne French, staged another "Gulf Oil Disaster – How Can We Protect Santa Barbara's Future" public forum [see article] with help from her amazing band of interns.

LeeAnne has also been traveling to North County, assisting our Land Use committee there

in the fight for sound community planning, and protection of working agriculture. You should have seen her presenting to the Lompoc City Council on behalf of Bailey Avenue's farming history.

And yeah, we are getting hit by the bad economy just like very other non-profit and good cause around. But we're rolling up our sleeves, and working just a little bit harder until these rough seas calm. Help out if you can. You will not be receiving another CPA mailing this year - so we hope you will remember us in your Year-End Giving.

We look forward to see all of you at our Victorian Holiday party on Brinkerhoff Avenue. Happy New Year and Best Wishes for a Great 2011!

Steve Dunn

Changes on the CPA Board and Committee Info:

Welcome! We are excited to welcome Arelhy Arroyo Alvarez to the CPA Board of Directors. She has twelve years of professional experience in urban design, planning, architecture, and construction administration for private and public works projects. Arelhy has been in Santa Barbara for nearly three years and has been contributing to CPA's South Coast Land Use Committee. Prior to coming to the Central Coast, Arelhy specialized in large-scale transit and transportation projects including Boston Logan and Los Angeles airports. Previously, Arelhy was involved in high-end residential and planning projects



in Mexico. She has worked with public and private sectors throughout her career, including interaction and negotiation with municipal authorities and city planning departments, client presentations, and architectural justifications.

New CPA Advisory Board

Long overdue, the CPA Board of Directors is proud to announce the official creation of the CPA Advisory Board. Members of this board consist of both longtime CPA members as well as experts from the community who are willing to lend their expertise and guidance on issues relat-

ed to CPA's efforts. Members recently added to the CPA Advisory Board include:
- Louise Boucher and Selma Rubin (50th Anniversary)
- Donald Olson (Neighborhood Program)
- Arve Sjovold (Water Issues)

We expect to add more members in the near future.

Thank you! Our sincere gratitude for the years of service Gerry DeWitt has committed to the CPA Board. Gerry has recently stepped down from his post as Executive Vice President due to family health issues. We wish him and his family the best.

Get Involved:

The backbone of CPA is the work done on our committees. We need our members' participation to make these committees happen. Please consider joining one or more of the following:

SOUTH COUNTY LAND USE COMMITTEE
Meets 11:30am – 1:30pm on the 1st Monday of each month in downtown Santa Barbara and 11:30am – 1:30pm on the 3rd Monday of each month in Goleta.

Topics for upcoming meetings:
• SB Watersheds – minimizing the impact of land development
• SB Water Commission – 2010 Urban Water Management 20 year Plan
• SB Public Works – coping with our aging infrastructure
• "Quality of Life" - Congestion and Parking
• Development Planning and Infrastructure
• Goleta Valley and Gaviota Coast community plans
• Meet the Goleta Developers

COMPREHENSIVE PLANNING COMMITTEE
Meets 12:00 – 1:30pm on the 4th Monday of each month in Santa Barbara

Upcoming topics for Comprehensive Planning Committee include:

- Santa Barbara County Long Range Planning Priorities
- Agriculture in Santa Barbara County
- SOAR Initiative - Save our Agricultural Resources
- Infrastructure Risks from Climate Change
- Caltrans Update
- Energy Update

LOMPOC VALLEY & NORTH COUNTY LAND USE COMMITTEE

Meets on an as-scheduled basis in Lompoc – contact Carol Nash: rmnash@earthlink.net

For more information call the CPA office or email LeeAnne at citizensplanningsb@gmail.com. If you would like to help plan or host these and other events, contact LeeAnne.

Water Committee - Something old, something new...

What do National Geographic, Newsweek, the NY Times, Sacramento Bee, LA Times, John McCain, Harry Reid, Barack Obama, and CPA, have in common? Hint - it's something we all need, each day.

It's WATER, of course. Adequate supplies of water... for people, for food production, for a myriad commercial uses.

Where do we stand in an era of increasing climate, rainfall and snow-pack uncertainty? How

prepared are we to meet them? Do we have enough budgeted to get the job done right?

This year, all the publications listed above featured Page One or Cover stories about the reliability of our water supply. One of the few things Senators McCain, Reid, and President Obama, agree on is that southwest's long-term water supply is "already at risk".

As CPA celebrates its 50th Anniversary, what better time to announce the revival and revitalization of its Water Committee? Or, to seek interested residents to come forward, and join?

The Water Committee will consider old favorites, like;
• Explore the reliability and cost of State Water.
• Assess whether the future population growth projected for UCSB, various communities and agriculture will still be able to be supplied with water ... we can all afford.

- Consider the local impact from a major failure of the Sacramento Delta levees.
- Discussed the crucial link between water supplies, land use planning, development patterns, and how "water wheeling" over ever larger areas might affect those equations.
- Make current water conservation levels even better.

Fifty years ago, CPA's founders already had Water as a focus-issue. It still is today. Come join the co-chairs, Lee Moldaver and Robin Meacher, and Arve Sjovold as our Advisory Board water expert. The Water Committee meets the 1st and 3rd Wednesdays of the month at 12:00 noon at the CPA office.

LEAVE A LEGACY! Make a lasting difference – leave a legacy in our community through CPA!

As a non-profit, community-based organization, CPA plays an important role in our lives and in our community. Yet the reality is that we need long term financial support so we can carry out our good work far into the future.

Santa Barbara County is a special place. Perhaps you are a member of CPA, volunteer, and/or donate funds regularly to support our efforts because you care about Santa Barbara County and its future. You can also continue to support CPA's work well into the future through a bequest or planned gift. Through your will or trust, you can arrange the gift just as you would while living.

You can arrange for a gift several ways, most commonly through a paragraph in your will or living trust. It is also possible to bequeath items of value (such as jewelry or art), stocks or bonds, assets, your home or other real estate, any of which may also lower the estate taxes which might be levied.

How can I include CPA in my estate plan or will?

It's very easy! The following language options may be helpful to you and your attorney or financial planner:

UNRESTRICTED BEQUEST:

I give and bequeath \$_____ to Citizens Planning Association of Santa Barbara County, a California nonprofit corporation located in Santa Barbara, California, Federal Tax Identification #95-2104424.

SPECIFIC BEQUEST:

I give and bequeath [indicate specific asset(s)] further described as [description, such as real estate, item of jewelry, art piece, car model, etc.] to Citizens Planning Association of Santa Barbara County, a California nonprofit corporation located in Santa Barbara, California, Federal Tax Identification #95-2104424.

RESIDUE OF THE ESTATE:

I give and bequeath ___% of all the rest, residue, and remainder of my estate to Citizens Planning Association of Santa Barbara County, a California nonprofit corporation located in Santa Barbara, California, Federal Tax Identification #95-2104424.

Who can help me arrange a bequest or planned gift to CPA?

Talk with a professional financial advisor, professional estate planner, attorney, certified public accountant about this opportunity. Also, The Santa Barbara Foundation provides a useful resource on Planned Giving on their website: http://sbf.giftlegacy.com/plgive_main.jsp?WebID=GL2005-0327

Saving Prime Ag Land

Q. Where does food come from? **A.** The store?

Sadly, that classic parent-child interaction also sums up recent actions of Lompoc's City Council.

A large audience (including CPA) turned out in force for a long evening meeting in September, which overwhelmingly urged Lompoc City Council NOT to move the Urban Limit and open the door to the annexation of Bailey Avenue Specific Plan Area. By NOT changing the Urban Limit, the City Council would save prime Ag land from speculative housing development.

At first, it seemed like this coalition, which included everyone from Bess Christensen, Carol Nash, LeeAnne French [CPA], Joyce Howerton [SBCAN], Lompoc Valley farmer Leroy Scolari, SB Growers Association's Richard Quandt, EDC's Christina McGinnis, and dozens of Lompoc residents, had carried the day, when the Council voted against annexing the 270 acres of prime land along Bailey Avenue, to the consternation of the developers, ensconced in the back of the chamber.

Days later, however, a "Reconsideration" motion revealed the badly twisted-

arms of Lompoc's Council majority again turned against both public opinion, and the twin issues of compact urban borders and preservation of Ag land. Lompoc's Council publicly reversed themselves, approving the Bailey Avenue annexation w/o any clear explanation of what had caused votes to change. It was another of four controversial annexations they had approved.

Fifty years ago, rancher Duke Sedgwick was one of CPA's co-founders because he feared for the future of Ag and rural lands in Santa Barbara County. In Lompoc, his concern now seems prescient.

But CPA's commitment to sound community planning, and to protection of prime Ag lands and Williamson Act lands remains undiminished. We are not giving up on the Bailey Avenue fields near Lompoc, nor on the larger principles it represents. CPA's Lompoc Valley Land Use Committee has been re-energized by this struggle, and is actively recruiting new members to continue the fight.

Politicians in Lompoc may think food comes from stores, rather than farms. CPA and most Lompoc Valley residents know better. Stay tuned.

Oil Forum II Gulf Oil Disaster – How Can We Protect Santa Barbara County's Future

Enormous community interest for CPA's first public forum on "Gulf Oil Disaster: How Can We Protect Santa Barbara's Future?" [at the Faulkner Gallery] led the Citizens Planning Association to co-host a second forum with the Environmental Defense Center in early October focused on **Oil Spill Risk and Response in the Santa Barbara Channel.**

Speakers included: Congresswoman Lois Capps; Santa Barbara Mayor Helene Schneider; U.S. Coast Guard Captain Roger Laferriere; CPA President Steve Dunn; EDC Chief Legal Counsel Linda Krop, Channel Islands National Marine Sanctuary Superintendent Chris Mobley, and Steve Sawyer, California Dept. of Fish and Game Office of Spill Prevention and Response (OSPR).

Mayor Schneider [recently visited Gulf of Mexico cities directly impacted by the BP blowout] emphasized the devastation of natural resources, and the widespread economic impacts. She noted that

"emergency prep" planning, and inter-agency cooperation for Santa Barbara Channel on and offshore energy facilities, "already puts us well ahead with the communication and early-responder tools" that were needed in the first days after the BP disaster. She has "confidence that this kind of 'uncontrollable, catastrophic event' is much less likely here."

Captain Laferriere [U.S. Coast Guard LA/Long Beach] was a Gulf Incident Commander after the BP blow-out. He focused on the danger and complexity involved in a multi-agency, public/private "effective response to an 'uncontrollable event' many, many miles offshore, originating thousands of feet below the water surface. Contrasting the BP Gulf blowout with the 1969 SB Channel spill, he supported Mayor Schneider's view that a "multiplicity of Santa Barbara Channel emergency procedures and joint-action response plans", plus the much shallower water depth beneath most platforms, and their proximity to shore," suggest a BP-style, 'uncontrolled blow-out' is much

less likely to ever happen here" He lauded the training and cooperation Santa Barbara County agencies bring to the local process.

Steve Dunn [President of CPA, and involved in Channel fishing and recreation activities all his life], talked about the economic value of fishing and tourism to Santa Barbara County. He identified the challenges of overlapping layers of local, state, federal regulations in the Channel for commercial and recreational fishermen. Adamant about the dangers of dispersants, Steve opened up a lively topic during the Q&A session.

Chris Mobley [Superintendent of the Channel Islands National Marine Sanctuary], described the boundaries of the Sanctuary, which embraces marine areas surrounding the Channel Islands and parts of the Channel. Mobley talked about how new science and satellite mapping tools help delineate "areas of risk" from Channel tanker/freighter traffic. He underscored the importance of our "high value marine

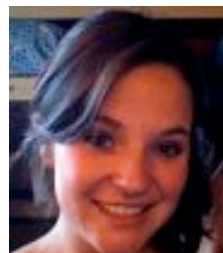
resources" which a new spill could put at risk.

Steve Sawyer [Department of Fish and Game OSPR] explained that Channel oil lease and transport agreements forged in the 1980s require the ongoing presence of "specially trained and exceptionally well equipped 'emergency response vessels' in or near the Channel on a 24x7, 365 day a year basis to deal with any oil platform, pipeline, or spill emergency." He noted that "a quick response is essential for best 'containment results,' and each hour's delay reduces the odds for fast containment." He too was "reasonably confident that a 'BP style event' was unlikely to happen again" in the Channel, "even though, in my line of work, we are trained to never say Never."

Interns Update!

CPA has been fortunate to have such a great group of Interns working with us over the summer. As part of CPA's public outreach and education efforts, Ali Morrow, Catherine Omalev and Madeline Wikander organized all the logistics for the two Oil Forums that CPA sponsored with the Environmental Defense Center. A HUGE THANK YOU to Ali, Catherine and Maddy!!

Ali back and excited that she has agreed to help LeeAnne on a consistent basis with the monthly membership mailings as well as ongoing event planning efforts.



Maddy has been a trouper all summer and continues to play a key role in the organization of CPA's upcoming BRINKERHOFF HOLIDAY BLOCK PARTY. She and fellow intern, Emil, have the onerous task of tracking down and synthesizing all the historical information on the Brinkerhoff Avenue Landmark District.

We welcome **Emil Kraus** to the CPA team of volunteer interns! Emil is a native of Santa Barbara and completed



his undergraduate studies in philosophy at UC Santa Cruz. Now that he is back home, he wants to learn more about the history of Santa Barbara. Emil is already becoming a familiar face at the city records office and the historical museum as he tracks down information on the Victorian homes along Brinkerhoff Avenue.



After learning more about how local government works during her internship at CPA,

Catherine has decided to go to graduate school to study public policy. She is going home to San Diego to finish her exams and applications. While we are sorry to see her leave, we wish her well and have written a stellar letter of recommendation. Good Luck, Catherine.



Water Committee co-Chair, **Robin Meacher**, graduated in 2009 from UCSB with a bachelor's degree in Environmental Studies. Her interest in water management "rose to the surface" in the Feather River watershed where she was raised. She is currently in the process of applying to Law school to study water law and policy.



Ali spent the month of September in Nicaragua visiting family. While she had a great time, she is happy to be back and dry in Santa Barbara. We are thrilled to have

WILLING TO DONATE ITEMS TO CPA?

If you are able to donate any of the following items, we would be grateful and happy recipients! Please contact us at (805) 966-3979 or LeeAnne@citizensplanning.org if you are interested in donating any of these items to us:

- One or two new PC computers (ask us about specific need and what we would like)
- Three 2-line phones with hold, speaker & conference call capability
- Vacuum
- Lumber (2x4s) for creating shelving in our storage unit
- \$250 gift certificate to FedEx to create new 4' and 6' CPA banners